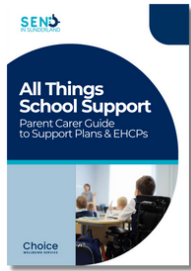
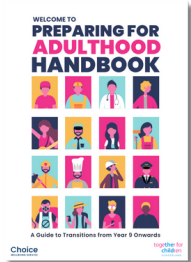
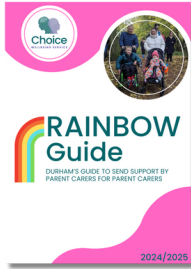
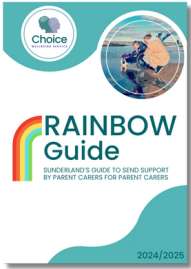


Here are just a few more guides we have available!



Guides on specific subjects

Rainbow Guides



Transitions Guides

# Blue Badge Scheme

Parent Carer Guide to Applying

# Your Child, Your Choice

Because one size doesn't fit all

Find our website here:



Choice  
WELLBEING SERVICE



Blue Badge is a parking permit that allows people with disabilities or health conditions to park closer to their destination. Enabling those with significant mobility impairments to park more conveniently or those who may have little knowledge of safety, reducing the distance they need to travel.



### Eligibility for a child:

- Receiving the higher rate of the mobility component of Disability Living Allowance (DLA)
- Receiving Personal Independence Payment (PIP)
- Being registered blind (severely sight impaired)
- Hidden disabilities
- Having a disability that can cause mobility problems
- Caring for a child with a health condition

### Walking Difficulties:

- The child must have a physical disability that causes very considerable difficulty in walking, or they are unable to walk at all.
- a person who may be at risk of serious harm when walking - or pose, when walking

### Difficulties not always visible:

- a risk of serious harm to any other person due to non-visible disabilities,
- behaviours or lack of situational awareness which present safety risks for the disabled person or others.

### Medical Conditions:

- The child may qualify if they have a medical condition that means they must always be kept near a vehicle in case they need emergency medical treatment, or if they must be accompanied by bulky medical equipment.

### Under 3 Years Old:

- If the child is under 3, they may qualify if they have a medical condition that requires them to be kept near a vehicle for emergency medical treatment.

### What you can do with a Blue Badge

- Park in designated disabled parking bays
- Park free of charge at on-street parking meters and in Pay and Display bays
- Park on single or double yellow lines for up to 3 hours

### Using your Blue Badge

- You can **only** use your child's badge when you're driving them, they are a passenger in a car, or someone is picking them up or dropping them off.
- The driver must follow the rules of the road, which are set out in the Highway Code.

### How to Apply:

#### Apply Online:

You can apply for a Blue Badge online through [GOV.UK](https://www.gov.uk).

#### Choose "Someone Else" Application:

When applying, select the option that you are applying "on behalf of someone else".

#### Gather Required Information:

You'll need to provide information about the child's condition, including details about their walking ability or medical needs.

#### Upload Supporting Documents:

You may need to upload documents such as proof of identity, proof of address, and any relevant medical evidence.

If for any circumstance your child may not meet the eligible criteria, you could be referred to an expert assessor, or occupational therapist for further consideration.

#### Pay for the Badge:

Once your application is approved, you will need to pay for the Blue Badge, which costs £10.

#### Processing Time:

Sunderland City Council states that it can take up to 12 weeks for them to let you know the decision.

Find out more here:

